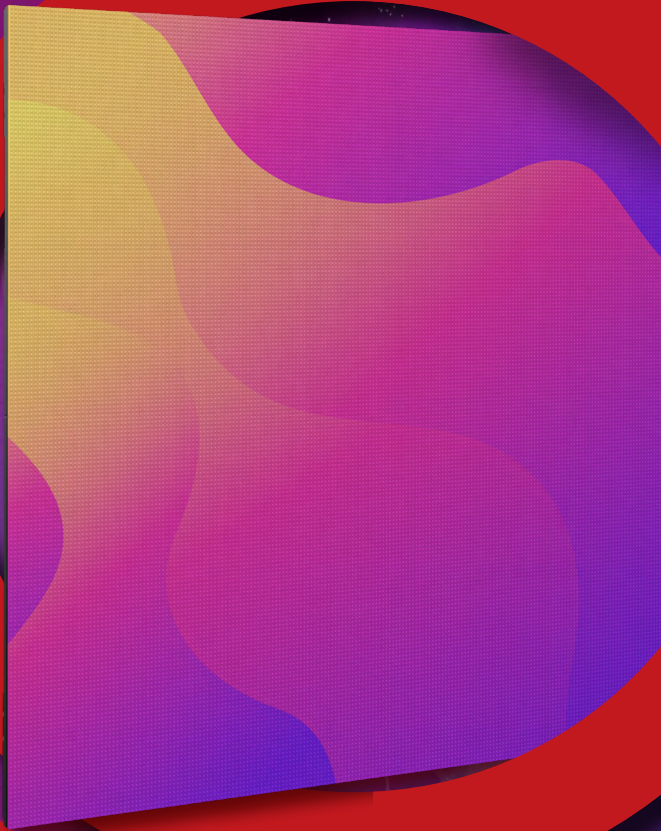


# ROE

CREATIVE DISPLAY



## Diamond 2.6

The Lightweight, Small-Pitch Alternative

INDOOR LED PANELS



# Diamond Series

offers the excellent small-pitch alternative

The Diamond Series is an affordable, LED panel with a vivid viewing experience. The Diamond Series screens caters for visual brilliance and a flawless finish in a lightweight panel. The impeccable quality makes it the ideal choice for corporate and live event solutions.

\\ Cost-effective and Cutting-edge  
LED Design and Technology //

## Ultra-Lightweight

Diamond panels measure 500x500mm and weigh less than 6 kilos per panel. Lightweight magnesium alloy frame ensures extreme durability.

## Superb Visual

The sleek design with Black LEDs adds high contrast and brightness for a vivid viewing experience.





## Curving Capability

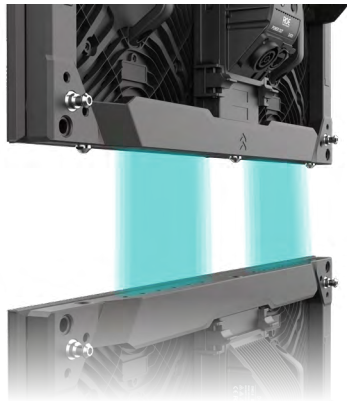
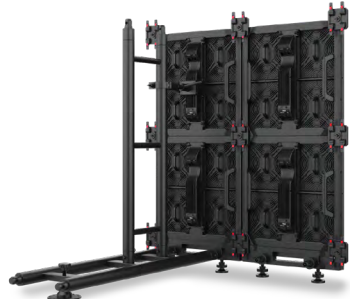
Concave and convex curving capabilities provide expanded flexibility to realize uniquely creative stage design.



## Hanging or Stacking Configuration

Efficient and cost-effective hanging or stacking options:

- Combined Hanging/Base Bar 500mm + Trigger Clamp
- Combined Hanging/Base Bar 1000mm + Trigger Clamp
- ROE Stacking System Rear truss - 1000mm
- ROE Stacking System Base truss - 910mm



## Magnet-assisted Assembly

Magnets are integrated into the Diamond panels offering easy setup in both hanging or stacking configurations.

## Accessories and Panel Locks



Connection Plate Adjustable -10 to +5° - 4-Way



Connection Plate Adjustable -10 to +5° - 2-Way



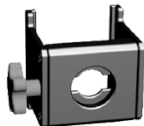
Connection Plate Fixed 2-Way - Indoor only



Connection Plate Fixed 4-Way - Indoor only



Stacking System Rear Connector



Stacking System Adapter Rear Connector

Cost-efficient



Lightweight panel design



Saves transport volume



90° corner



Black LED for high contrast and brightness



Pixel pitch  
DM2.6 – 2.6mm  
DM3.9 – 3.9mm



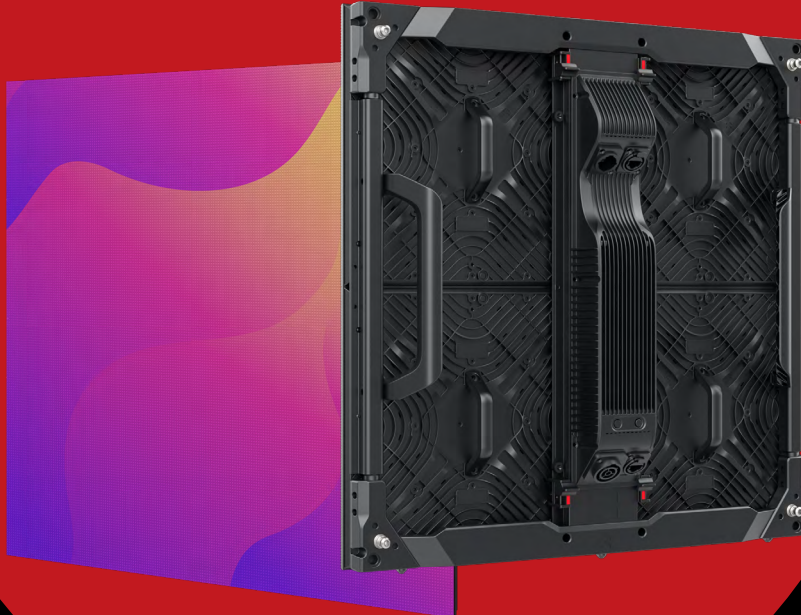
Curved configuration possible



Indoor use



## Key-Features



# Specifications

Diamond	DM2.6
Pixel Pitch	2.60mm
Max Brightness Calibrated	1500nits
Panel Dimension	500mm x 500mm x 80mm   19.7" x 19.7" x 3.2"
Panel Resolution (H x V)	192 x 192
Panel Weight	5.76kg; 12.7lbs
Power Consumption Max / Average	180W / 90W
BTU Max / Average	610 / 280
Transparency	Solid
Curving (Concave & Convex)*1	Concave 10° - Convex 5°
Max. Hanging (panels) *2	20
Max. Stacking (panels) *3	12
LED Configuration	SMD 1515 Black
Viewing Angle Horizontal	140°
Viewing Angle Vertical	140°
Scan Ratio	1/16
Refresh Rate	3840Hz
Gray Scale	14bit
Frame Material	Magnesium Alloy
Processing Platform	Evision / Brompton / Megapixel
Operational Temp / Humidity	-20°-45°C, 10-90%RH   -4°-113°F, 10-90%RH
Storage Temp / Humidity	-40°-60°C, 10-90%RH   -40°-140°F, 10-90%RH
IP Rating	Indoor
Certifications	CE, ETL, TUV, WEEE

\*Notes: The Specifications are for reference, actual values may vary.

1. Convex curving ability only applies to custom tiles.
2. The max. hanging amount is only valid when the ROE Visual hanging bar and complementary accessories are used and in an indoor situation, safety factor is 8. No climbing is allowed.
3. The max. stacking amount is only valid when the ROE Visual stacking system and complementary accessories are used, sufficient ballast is applied and in an indoor situation. No climbing is allowed.

## Dimensions



[www.roevisual.com](http://www.roevisual.com)

ROE China | ROE US | ROE EU | ROE UK | ROE JP | ROE ME | ROE AUS

[roe@roevisual.com](mailto:roe@roevisual.com)