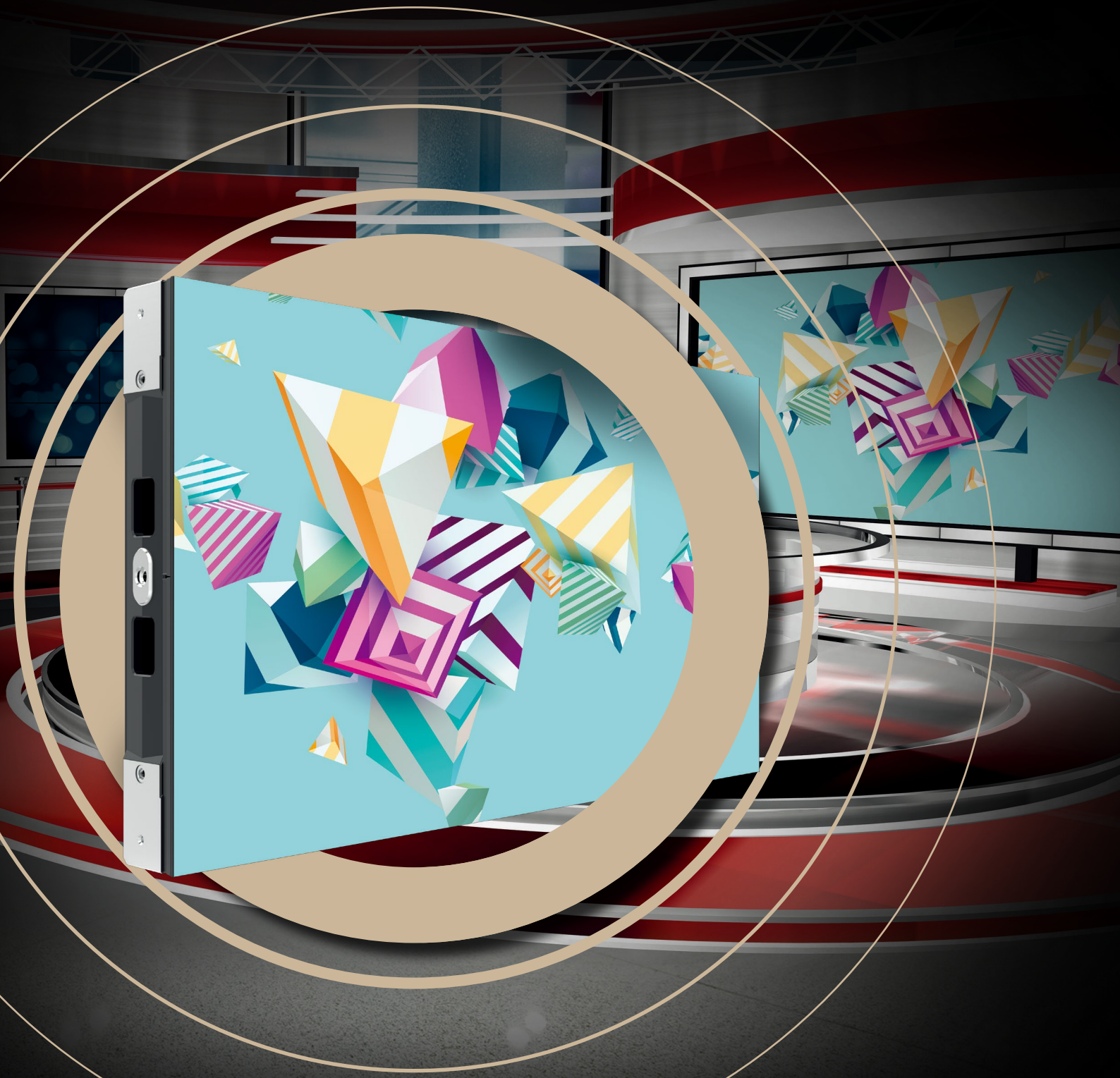


ROE Display
Solutions



Amber

Fine Pitch. Excellent Visuals

INDOOR FIXED INSTALL

Amber LED Platform

Creating a Myriad of Possibilities

ROE Visual has designed a range of products specially adapted for use in permanent installations. Based on its in-depth experience with products used in the live industry ROE Visual has developed and designed products based on the same philosophy; adaptable products that offer excellent visual quality and that are easy to install, maintain and use.

Creating an infinitive range of installation possibilities, ROE Visual supplies the display solution that suits your requirements, no matter how demanding they are.



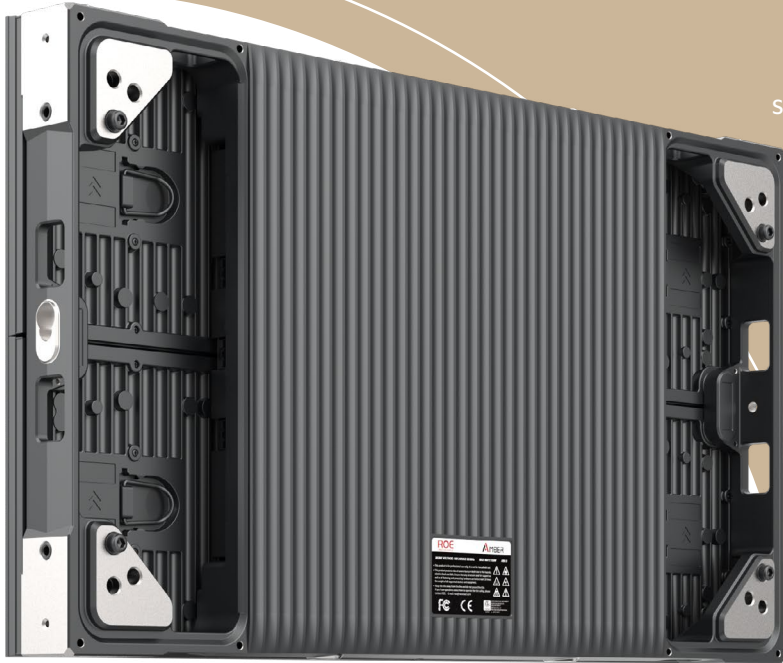
Amber. Sophisticated NPP LED Screens for Environments where Excellent Visuals Count

Installing a fine pitch video screen in exacting environments, like corporate boardrooms, broadcast studios or control rooms just got easier. The Amber LED panels by ROE Visual are developed to play into the demands for permanent video installations. Uncomplicated installation, adaptable design and easy low-key and low-cost maintenance go hand-in-hand with high-end performance and unequalled visual qualities.



HDR technology

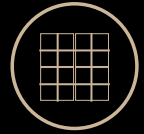
HDR



Slim-line panel design



Fully adjustable mounting frame



Front service



Modular design – saves on spare parts



16:9 ratio in panel design. Native 4K



Fine pixel pitch
1.2, 1.5, 1.8



Extended LED lifecycle,
energy saving and efficient
heat-dissipation



“ Need a big or small screen?
The visuals are always stunning ”



Fine Pixel Pitch
Platform Available in:

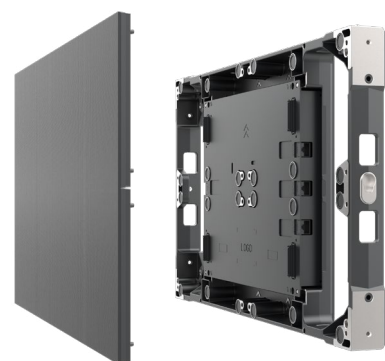
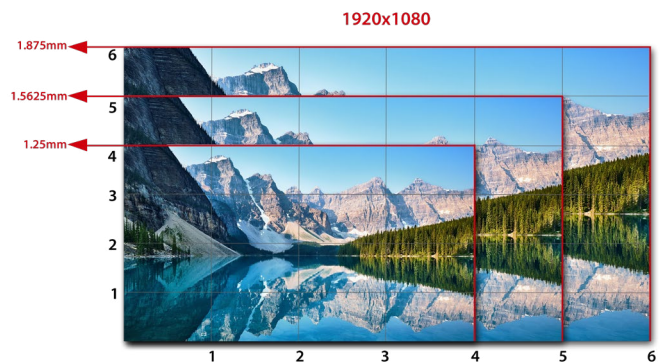
- 1.5625 4in1 LED
- 1.25 4in1 LED
- 1.875 LED

IM Components – Rental Quality

Translating rental experience to fixed install. The Amber LED panels are out of the standard league of fixed install products, based on profound experience, gained with products for the touring market, the Amber LED modules are equipped with robust IM components that are designed and made to last. This means your LED performance is flawless from the start and will keep that way – no matter how often you'll use it.

Versatile Visual Performance

The Amber LED panels have an excellent visual performance due to the high contrast and robust 4in1 LEDs, guaranteeing flawless image performance in all circumstances. The resulting video screen boasts 99% color cover BT.709 and 95% color cover DCI-P3 for broadcast requirements avoiding the interference lines.



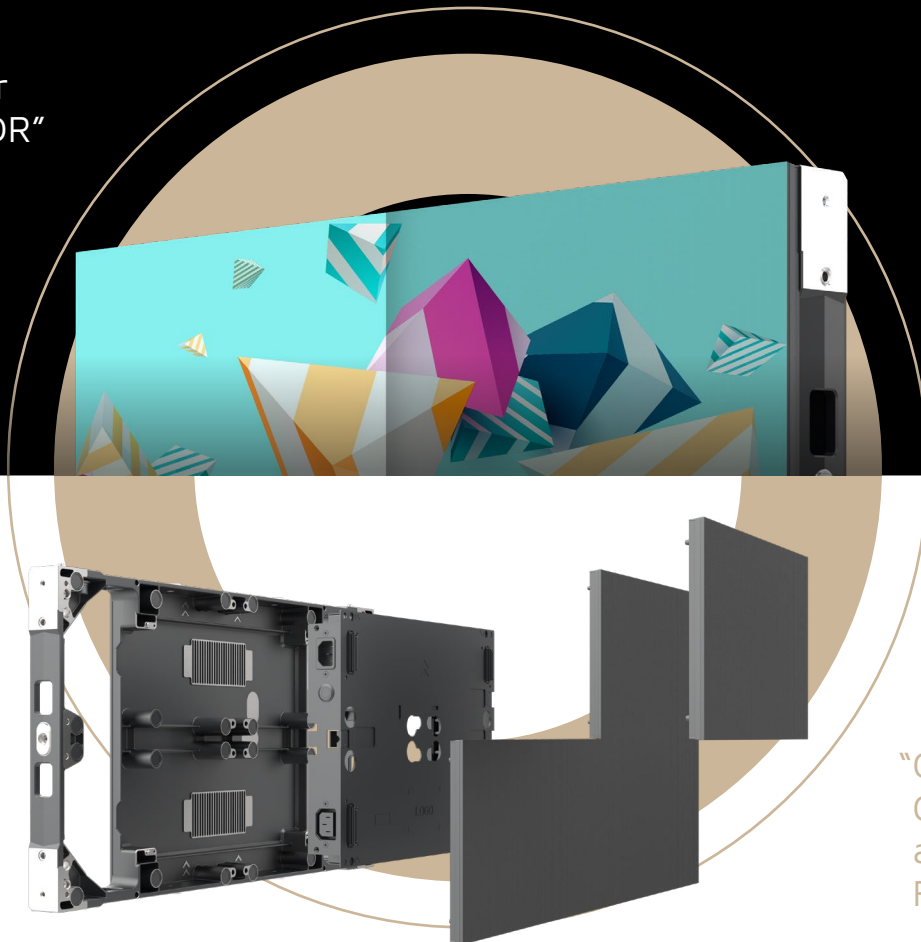
Flexible Mounting Possibilities

The Amber LED panels mount easily due to a clever mounting frame, which can be built in any space and mounted to any wall type. The frame can be adjusted to almost any required screen size. The panels are mounted from the front side, using special tool that guarantees a flawless fit. The slim design of the panel and frame results in a very flat screen.

NPP Solutions with HDR Technology

The Amber LED panels support HDR technology resulting in an excellent graphic quality with added greyscales and excellent color depth. In combination with a selection of fine pitch LED solutions, ranging from 1.25 till 1,875, the Amber screen offers a flexible system with incomparable visual quality. Based on a native 4K 16:9 panel resolution and a unique 8K processor, this screen is ready for future requirements.

“Even brighter with HDR”



“Click on Frame Cover for Neat and Clear Frame Finish”

Ultimate Control Due to Full Redundancy

Using the Amber LED panels you don't need to worry about unplanned downtime of your screens.

The panels are equipped with a fully redundant power supply system. This optional dual power supply will keep your panels up - and running at all times.

Sustainable Long-term Solution

With its energy saving power unit and re-calibration options, the Amber LED panel ensures years of easy operation and stable visual excellence.

Specifications

Amber	Amber 1.2	Amber 1.5	Amber 1.8
Pixel Pitch	1.25mm	1.5625mm	1.875mm
Max Brightness Calibrated	800nits	800nits	800nits
Panel Dimension	600 x 337.5 x 55 mm 23.6" x 13.2" x 2.1"	600 x 337.5 x 55 mm 23.6" x 13.2" x 2.1"	600 x 337.5 x 55 mm 23.6" x 13.2" x 2.1"
Panel Resolution (H x V)	480 x 270	384 x 216	320 x 180
Panel Weight	8.5kg; 18.7lbs	8.5kg; 18.7lbs	8.5kg; 18.7lbs
Power Consumption Max / Average	170W / 85W	180W / 90W	170W / 85W
BTU Max / Average	580 / 270	615 / 285	580 / 270
Transparency	Solid	Solid	Solid
Serviceability	Front	Front	Front
LED Configuration	4 in 1 LED	4 in 1 LED	SMD 1010
Viewing Angle Horizontal	160°	160°	160°
Viewing Angle Vertical	140°	140°	140°
Scan Ratio	1/18	1/18	1/18
Refresh Rate	3840Hz	3840Hz	3840Hz
Gray Scale	14bit	14bit	15bit
Frame Material	Diecast Aluminum	Diecast Aluminum	Diecast Aluminum
Installation	Hanging / Stacking / Mounting	Hanging / Stacking / Mounting	Hanging / Stacking / Mounting
Processing Platform	MVR / Brompton	MVR / Brompton	MVR / Brompton
Operational Temp / Humidity	-20°~45°C, 10~90%RH -4°~113°F, 10~90%RH	-20°~45°C, 10~90%RH -4°~113°F, 10~90%RH	-20°~45°C, 10~90%RH -4°~113°F, 10~90%RH
Storage Temp / Humidity	-40°~60°C, 10~90%RH -40°~140°F, 10~90%RH	-40°~60°C, 10~90%RH -40°~140°F, 10~90%RH	-40°~60°C, 10~90%RH -40°~140°F, 10~90%RH
IP Rating	Indoor	Indoor	Indoor
Certifications	CE, ETL, FCC	CE, ETL, FCC	CE, ETL, FCC

Notes: The specifications are for reference, actual values may vary.

Dimensions



www.roevisual.com

ROE China | ROE US | ROE EU | ROE UK | ROE JP | ROE ME | ROE AUS
roe@roevisual.com