

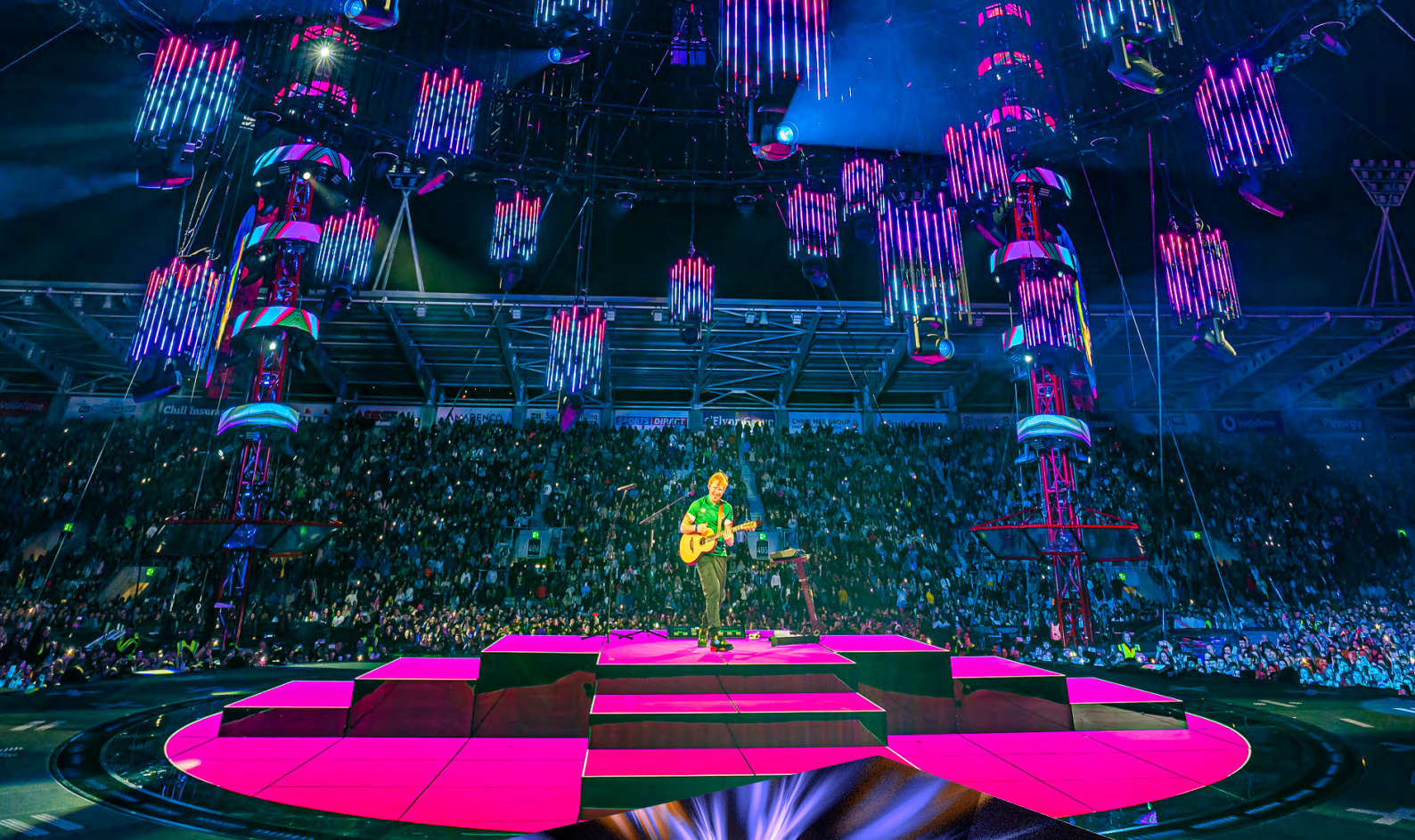
ROE
CREATIVE DISPLAY



Black Marble BM4

Brilliant LED At Your Feet

IN- & OUTDOOR LED PANELS



Versatile LED Panels for Stylish Floors and Walls

Black Marble BM4 LED panels are designed to offer a stylish solution for LED floors and integrated walls. The finish of the top layer allows for high-end use with a chic and classy appearance. The ability to mix and match panels with different finishes make it suited for enhanced creative experience in floors, walls and multi-level stages or stairs.

Even Greater Visuals with the Perfect Finish

With a 4mm pixel pitch the LED panels offer excellent visual qualities.



Matte-finish

A non-reflective LED panel, ideal for broadcast and live events



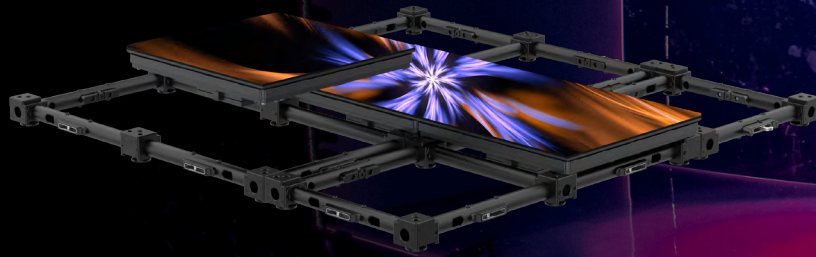
Deep black finish

A stylish glossy panel offering a true, deep black color, for a high-tech design look and feel



Versatile System

Black Marble LED panels can be built as LED floor, LED wall, stairs and multi-level stages and integrate this all. This thought-through system is very easy to install and enables users to apply their creative applications freely and enables the application of a variety of creative designs.



LED floor frame

LED wall frame

LED stair / multi-level frame



Support Options

Support Frame; guaranteeing a safe and sturdy floor support. The floor is designed to withstand a load of 2000kg/m².

Stair System; create multi-level floors, stairs and spectacular show elements. Based on the standard Support Frame, extra riser elements can be added. The Aluminum Stair System for Black Marble is a light-weight, easy to build system and can create various levels, lengths and sizes, up to a maximum of 3m height.

Wall System; you can create classy looking LED walls offering integration possibilities for retail and architectural applications. The special Aluminum system for Black Marble is a light-weight, easy to build system which can be either stacked or flown.

Create Visual Illusions Beyond Your Imagination

Top access for easy module maintenance.



IP 65 rating, outdoor use and wet cleaning to easily keep your floor in pristine condition.



Safety first max.loading 2000kg/m²



Stairs and multi-level stages - the standard step height is 208mm



Safe Access - anti-slip surface on all LED panels



Magnetic Modules, easy module swapping



Fast and Easy set-up

All support options are easy and fast to install, using a minimal number of tools, reducing assembly time and saving labor costs.



Boundless Creativity

Triangular panels; Ideal to make round LED floors or other creative shapes.

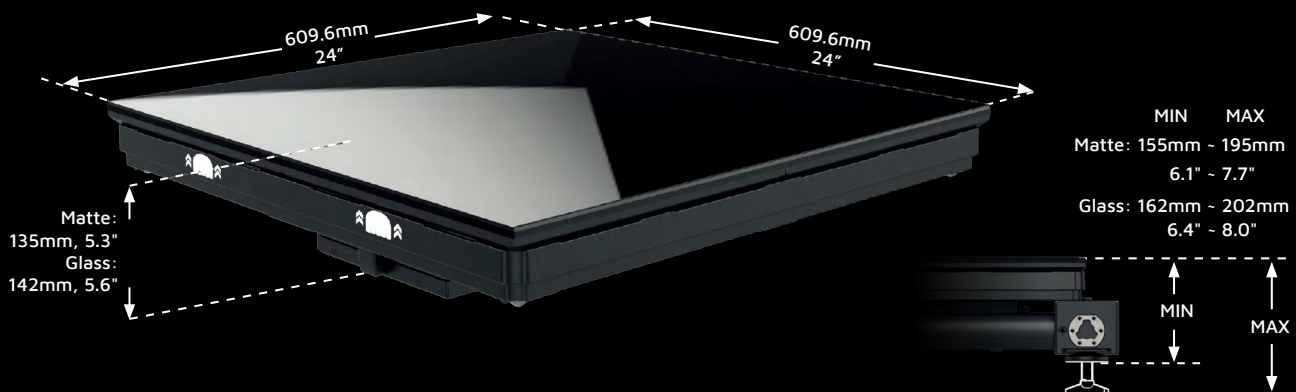


Specifications

Black Marble	BM4 Glass	BM4 Matte
Pixel Pitch	4.76mm	4.76mm
Max Brightness Calibrated	800nits	Matte: 2000nits Deep Black Matte: 800nits
Panel Dimension	609.6mm x 609.6mm x 142mm 24" x 24" x 5.6"	609.6mm x 609.6mm x 135mm 24" x 24" x 5.3"
Panel Resolution (H x V)	128 x 128	128 x 128
Panel height incl.frame / feet	162-202 mm	155-195 mm
Panel Weight	23.4kg; 51.59lbs	17.5kg; 38.58lbs
Power Consumption Max / Average	290W / 145W	290W / 145W
BTU Max / Average	990 / 460	990 / 460
Transparency	Solid	Solid
Serviceability	Front	Front
LED Configuration	SMD 1921 White	SMD 1921 White
Viewing Angle Horizontal	140°	140°
Scan Ratio	1/8	1/8
Refresh Rate	3840Hz	3840Hz
Gray Scale	14bit	14bit
Frame Material	Magnesium Alloy	Magnesium Alloy
Processing Platform	Brompton / Evision / Megapixel	Brompton / Evision / Megapixel
Operational Temp / Humidity	-20°-45°C, 10-90%RH -4°-113°F, 10-90%RH	-20°-45°C, 10-90%RH -4°-113°F, 10-90%RH
Storage Temp / Humidity	-40°-60°C, 10-90%RH -40°-140°F, 10-90%RH	-40°-60°C, 10-90%RH -40°-140°F, 10-90%RH
IP Rating	Outdoor	Outdoor
Certifications	CE, ETL, FCC, WEEE	CE, ETL, FCC, WEEE

Notes: The specifications are for reference, actual values may vary.

Dimensions



www.roevisual.com

ROE China | ROE US | ROE EU | ROE UK | ROE JP | ROE ME | ROE AUS

roe@roevisual.com